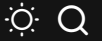


[TRENDING NOW](#)[CATEGORIES ▾](#)[RESOURCES ▾](#)[CONTACT](#)[Meadowlands Media](#) > [Blog](#) > [Health & Wellness](#) > [New Concepts for Living Opens Medically Supportive Home for Adults with I/DD](#)

New Concepts for Living Opens Medically Supportive Home for Adults with I/DD

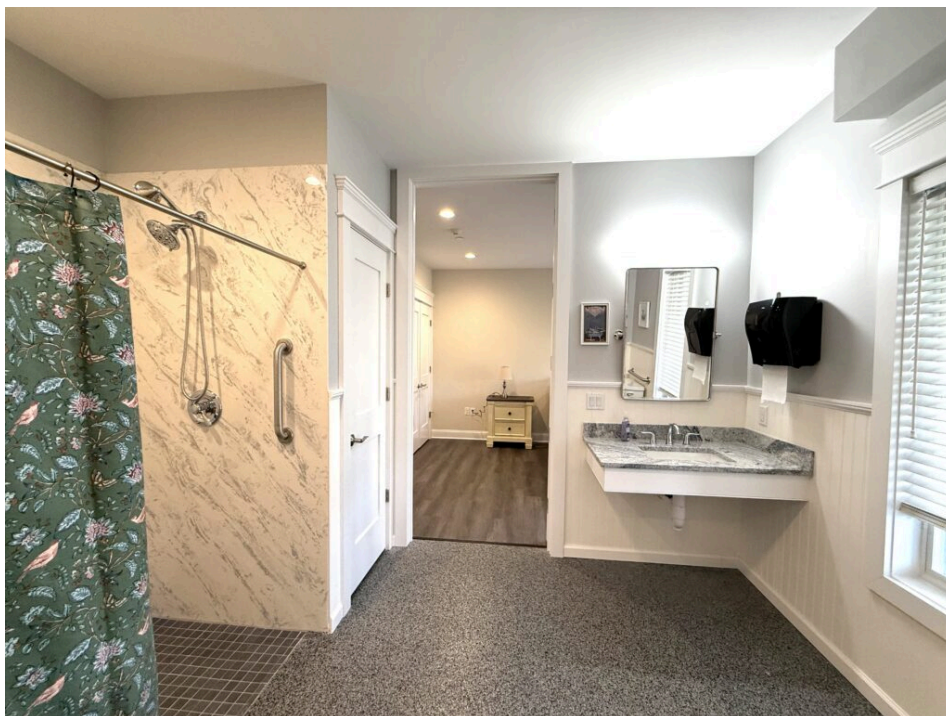
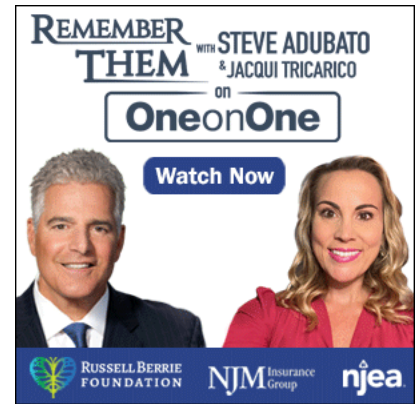


Meadowlands Media Staff | March 5, 2025

New Concepts for Living (NCFL) recently opened a six bedroom community residence in Hillsdale, New Jersey designed to serve medically fragile individuals who need on-site nursing care.



“Our medically supportive homes provide critical care in a comforting environment for individuals with intellectual and developmental disabilities and complex medical conditions such as feeding tubes and catheters,” said Steve Setteducati, CEO of New Concepts for Living, which provides community residences, day programs, and services for adults with intellectual and developmental disabilities (I/DD).



“Many of these individuals come from home environments where families, despite their best efforts, can no longer meet the increasing needs of their loved ones. At the Hillsdale home, as well as all our Community Residences, residents have access to

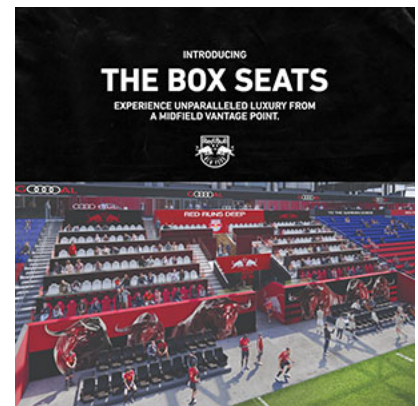
around-the-clock care in a safe, nurturing setting. Families can have peace of mind knowing their family members are in capable and compassionate hands,” Setteducati added.

The new Hillsdale home is NCFL’s 18th in New Jersey and the fourth serving medically fragile adults with I/DD. These residences can serve as alternatives to Intermediate Care Facilities (ICFs) for families seeking a more personal, home-like atmosphere by combining intensive medical support with a nurturing community setting.



Designed with accessibility and comfort in mind, NCFL’s residences meet the unique needs of individuals with I/DD and are thoughtfully built to enhance quality of life. They are fully accessible and feature wide doorways and spacious common areas to ensure ease of movement, while modern kitchens and two separate family rooms provide inviting spaces for visitors.

Each home is equipped with a dedicated physical therapy room, emergency exits in every bedroom, and ceiling tracks extending through bedrooms and bathrooms to provide safe transfer from room to room for those who require extra mobility support. The bathrooms also feature quick-dry overhead sunlamps and heating fans to promote faster drying, accommodating individuals with sensory processing sensitivities.



LOADING DOCK INC.
800-DOC-N-DOR

COMMERCIAL & INDUSTRIAL DOORS, AND LOADING DOCK EQUIPMENT

- ✓ Service
- ✓ Installations
- ✓ Replacements
- In NJ & NYC Metro Areas

Contact Us:

info@loadingdock.com
973-471-4060
https://www.loadingdock.com
HQ. 20 Meta Lane, Lodi, NJ 07644

40th Anniversary



NCFL provides 24/7 comprehensive care and individualized support tailored to each resident's specific needs. A highly trained staff includes direct support professionals (DSPs), registered and/or licensed practical nurses, and a team of behaviorists on-site or on call. Residents participate in recreational activities and community integration programs, such as outings and trips, that are designed to help them feel connected to their communities.

NCFL has plans to open four additional community residences in 2025, including another home for medically fragile individuals in Mahwah, N.J. For more information, visit www.ncfl.net or call 201-843-3427.

About New Concepts for Living

A not-for-profit formed in 1981 by a group of parents whose developmentally disabled children were transitioning into adulthood, New Concepts for Living (NCFL) is New Jersey's premier provider of community residences, day programs, and therapeutic and behavioral services for adults 21 and over living with intellectual and developmental disabilities.

TAGS: # MEADOWLANDS # NEW CONCEPTS FOR LIVING # NEW JERSEY

SHARE ON



< PREVIOUS ARTICLE

NEXT ARTICLE >



**FIFA World Cup 2026 Turns Up
the Volume with NJNY Sonic
Takeover**

**Real ID Opens 4K+ New
Appointments on Thursdays As
Deadline Nears**



You Might Also Enjoy



2025 Premier League Summer Series Team Spotlights: AFC Bournemouth, Everton, West Ham United

By **Daniel Neshan** | July 25, 2025



American Dream Hosts Largest Latin Food & Culture Festival This Weekend

By **Meadowlands Media Staff** | July 24, 2025



Meadowlands Racetrack, Clifton-Based Brewery Team Up to Provide Beers Honoring the 100th Hambletonian

By **Meadowlands Media Staff** | July 24, 2025



Can 23andMe Legally Sell Your Personal Genetic Data?

By **Porter Thomas Grabell Baumwoll PC** | July 23, 2025



Meadowlands Magazine—which has been serving the region's business community for over 40 years—is our flagship publication and reaches over 50,000 business owners and executives.

Meadowlands Media has grown to publish for consumer, business and visitor audiences across print and digital platforms, offering readers critical information and advertising partners prime exposure for their brands.

Meadowlands Media is the media and communications division of the Meadowlands Chamber, Meadowlands Live! | Convention & Visitors Bureau and the Meadowlands 2040 Foundation.



Latest Posts



2025 Premier League Summer Series Team Spotlights: AFC Bournemouth, Everton, West Ham United

July 25, 2025



American Dream Hosts Largest Latin Food & Culture Festival This Weekend

July 24, 2025



Meadowlands Racetrack, Clifton-Based Brewery Team Up to Provide Beers Honoring the 100th Hambletonian

July 24, 2025



Can 23andMe Legally Sell Your Personal Genetic Data?

July 23, 2025

